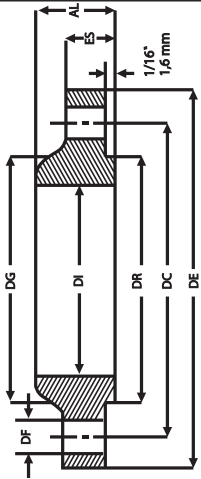


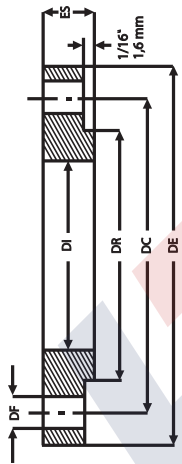
HT HidroTec

ANSI B 16.5 150 LBS.

D.N.	Flange							Furação		Peso aprox. kg/LBS		D.N.
	D.E.	D.I.	D.R.	D.G.	D.C.	E.S.	A.L.	D.F.	Nº Furos	Lisos	Slip-On	
1/2"	88.9	22.3	34.9	30.2	60.3	11.1	15.9	15.9	4	0.8	0.8	1/2"
	3.1/2"	0.88"	1.3/8"	1.3/16"	2.3/8"	7/16"	5/8"	5/8"		2	2	
3/4"	98.4	27.7	42.9	38.1	69.8	12.7	15.9	15.9	4	0.9	0.9	3/4"
	3.7/8"	1.09"	1.11/16"	1.1/2"	2.3/4"	1/2"	5/8"	5/8"		2	2	
1"	108.0	35.0	50.8	49.2	79.4	14.3	17.5	15.9	4	1.0	1.0	1"
	4.1/4"	1.38"	2"	1.15/16"	3.1/8"	9/16"	11/16"	5/8"		2	2	
1.1/4"	117.5	43.7	63.5	58.7	88.9	15.9	20.6	15.9	4	1.3	1.3	1.1/4"
	4.5/8"	1.72"	2.1/2"	2.5/16"	3.1/2"	5/8"	13/16"	5/8"		3	3	
1.1/2"	127.0	50.3	73.0	65.1	98.4	17.5	22.2	15.9	4	1.4	1.4	1.1/2"
	5"	1.97"	2.7/8"	2.9/16"	3.7/8"	11/16"	7/8"	5/8"		3	3	
2"	152.4	62.0	92.1	77.8	120.6	19.1	25.4	19.0	4	2.3	2.3	2"
	6"	2.44"	3.5/8"	3.1/16"	4.3/4"	3/4"	1"	3/4"		5	5	
2.1/2"	177.8	74.7	104.8	90.5	139.7	22.2	28.6	19.0	4	3.0	3.0	2.1/2"
	7"	2.94"	4.1/8"	3.9/16"	5.1/2"	7/8"	1.1/8"	3/4"		7	7	
3"	190.5	90.4	127.0	107.9	152.4	23.8	30.2	19.0	4	3.5	3.5	3"
	7.1/2"	3.56"	5"	4.1/4"	6"	15/16"	1.3/16"	3/4"		8	8	
3.1/2"	215.9	103.1	139.7	122.2	177.8	23.8	31.7	19.0	8	5.0	5.0	3.1/2"
	8.1/2"	4.06"	5.1/2"	4.13/16"	7"	15/16"	1.1/4"	3/4"		11	11	
4"	228.6	115.8	157.2	134.9	190.5	23.8	33.3	19.0	8	6.0	6.0	4"
	9"	4.56"	6.3/16"	5.5/16"	7.1/2"	15/16"	1.5/16"	3/4"		13	13	
5"	254.0	143.8	185.7	163.5	215.9	23.8	36.5	22.2	8	7.0	7.0	5"
	10"	5.66"	7.5/16"	6.7/16"	8.1/2"	15/16"	1.7/16"	7/8"		15	15	
6"	279.4	170.7	215.9	192.1	241.3	25.4	39.7	22.2	8	8.5	8.5	6"
	11"	6.72"	8.1/2"	7.9/16"	9.1/2"	1"	1.9/16"	7/8"		19	19	
8"	342.9	221.5	269.9	246.1	298.4	28.6	44.4	22.2	8	13.5	13.5	8"
	13.1/2"	8.72"	10.5/8"	9.11/16"	11.3/4"	1.1/8"	1.3/4"	7/8"		30	30	
10"	406.4	276.3	323.8	304.8	361.9	30.2	49.2	25.4	12	19.5	19.5	10"
	16"	10.88"	12.3/4"	12"	14.1/4"	1.3/16"	1.15/16"	1"		43	43	
12"	482.6	327.1	381.0	365.1	431.8	31.8	55.6	25.4	12	29.0	29.0	12"
	19"	12.88"	15"	14.3/8"	17"	1.1/4"	2.3/16"	1"		64	64	
14"	533.4	360.4	412.7	400.0	476.2	34.9	57.1	28.6	12	38.5	38.5	14"
	21"	14.19"	16.1/4"	15.3/4"	18.3/4"	1.3/8"	2.1/4"	1.1/8"		85	85	
16"	596.9	411.2	469.9	457.2	539.7	36.5	63.5	28.6	16	42.0	42.0	16"
	23.1/2"	16.19"	18.1/2"	18"	21.1/4"	1.7/16"	2.1/2"	1.1/8"		93	93	
18"	635.0	462.0	533.4	504.8	577.8	39.7	68.3	31.7	16	54.0	54.0	18"
	25"	18.19"	21"	19.7/8"	22.3/4"	1.9/16"	2.11/16"	1.1/4"		120	120	
20"	698.5	512.8	584.2	558.8	635.0	42.9	73.0	31.7	20	70.0	70.0	20"
	27.1/2"	20.19"	23"	22"	25"	1.11/16"	2.7/8"	1.1/4"		155	155	
24"	812.8	614.4	692.1	663.6	749.3	47.6	82.5	34.9	20	95.0	95.0	24"
	32"	24.19"	27.1/4"	26.1/8"	29.1/2"	1.7/8"	3.1/4"	1.3/8"		210	210	



Sobreposto



Liso